

DISTRICT OF SECHELT

BYLAW NO. 613, 2023

*A Bylaw to close certain portions of a public highway
and cancel the dedication of such highway*

WHEREAS pursuant to Section 40 of the *Community Charter* SBC 2003, c. 26 as amended, a Municipal Council may, by Bylaw, close all or part of a highway that is vested in the municipality to all or some types of traffic and may remove the dedication of a highway that has been or is being closed by the same bylaw;

AND WHEREAS, as required by the *Community Charter*, Council has posted and published notice of its intention to close and remove the dedication as a highway from, and dispose of the highway referred to in this Bylaw, and Council has provided an opportunity for persons who consider they are affected by such closure and removal to make representations to Council;

AND WHEREAS, as required by the *Community Charter*, Council has delivered notice of its intention to the operators of utilities whose transmission or distribution facilities that Council considers will be affected by the closure;

AND WHEREAS Council has obtained approval from the Minister of Transportation and Infrastructure regarding its plan to close and remove the dedication as a highway from, and dispose of the highway referred to in this Bylaw;

AND WHEREAS the Council has caused notice of its intention to close and remove the dedication as a highway from, and dispose of the highway referred to in, this Bylaw, to be delivered to the operators of utilities whose works or facilities may be affected by such removal and disposition.

NOW THEREFORE THE MUNICIPAL COUNCIL OF DISTRICT OF SECHELT, IN OPEN MEETING ASSEMBLED, ENACTS AS FOLLOWS:

1. This Bylaw may be cited for all purposes as **District of Sechelt Road Closure and Disposition Bylaw No. 613, 2023 (5550 Wharf Avenue Lane)**.
2. That 129.2 square metre portion of public highway identified as "ROAD TO BE CLOSED" on the Reference Plan numbered EPP117410, a reduced copy of which is attached hereto as Schedule "A", (the "Closed Road") is hereby stopped up and closed to all traffic.
3. The dedication of the Closed Road is hereby cancelled and removed.
4. The Closed Road shall cease forever to be a public highway and title thereto shall be vested in District of Sechelt, subject to its further disposition or exchange.

5. Schedule "A" attached hereto shall form part of this bylaw.
6. The Mayor and the Municipal Clerk of District of Sechelt are hereby authorized to execute such conveyances, deeds, maps, plans, receipts and documents on behalf of District of Sechelt as may be required in connection with the aforesaid purposes.

READ A FIRST TIME the 4th day of October, 2023.

READ A SECOND TIME the 4th day of October, 2023.

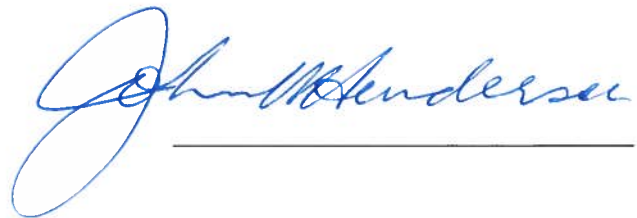
READ A THIRD TIME the 4th day of October, 2023.

PUBLIC NOTICE OF INTENTION
TO PROCEED posted in the public notice
posting place on and since the 6th day of October, 2023.

PUBLIC NOTICE OF INTENTION
TO PROCEED was advertised in the
Coast Reporter on the 13th day of October, 2023 and the
20th day of October, 2023.

APPROVED BY THE
MINISTRY OF TRANSPORTATION
AND INFRASTRUCTURE the 27th day of March, 2024.

ADOPTED the 1st day of May, 2024.



Mayor



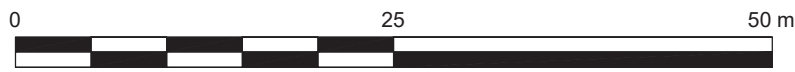
Municipal Clerk

REFERENCE PLAN TO ACCOMPANY
DISTRICT OF SECHELT ROAD CLOSURE
BYLAW NUMBER 613, 2023
DISPOSING OF PART OF LANE
DEDICATED ON PLAN 8478.

PLAN EPP117410

PURSUANT TO SECTION 120 OF THE LAND TITLE ACT.
PURSUANT TO SECTION 40 OF THE COMMUNITY CHARTER

BCGS 92G.042



ALL DISTANCES ARE IN METRES AND DECIMALS THEREOF

THE INTENDED PLOT SIZE OF THIS PLAN IS 432 mm IN WIDTH BY 280 mm IN HEIGHT (B-SIZE) WHEN PLOTTED AT A SCALE OF 1:500

THIS PLAN LIES WITHIN INTEGRATED SURVEY AREA No. 79, (MUNICIPALITY OF SECHELT), NAD83 (CSRS) 4.0.0.BC.1

GRID BEARINGS ARE DERIVED FROM OBSERVATIONS BETWEEN GEODETIC CONTROL MONUMENTS 09H2562 AND 08H2550 AND ARE REFERRED TO THE CENTRAL MERIDIAN OF UTM ZONE 10 (123° WEST LONGITUDE)

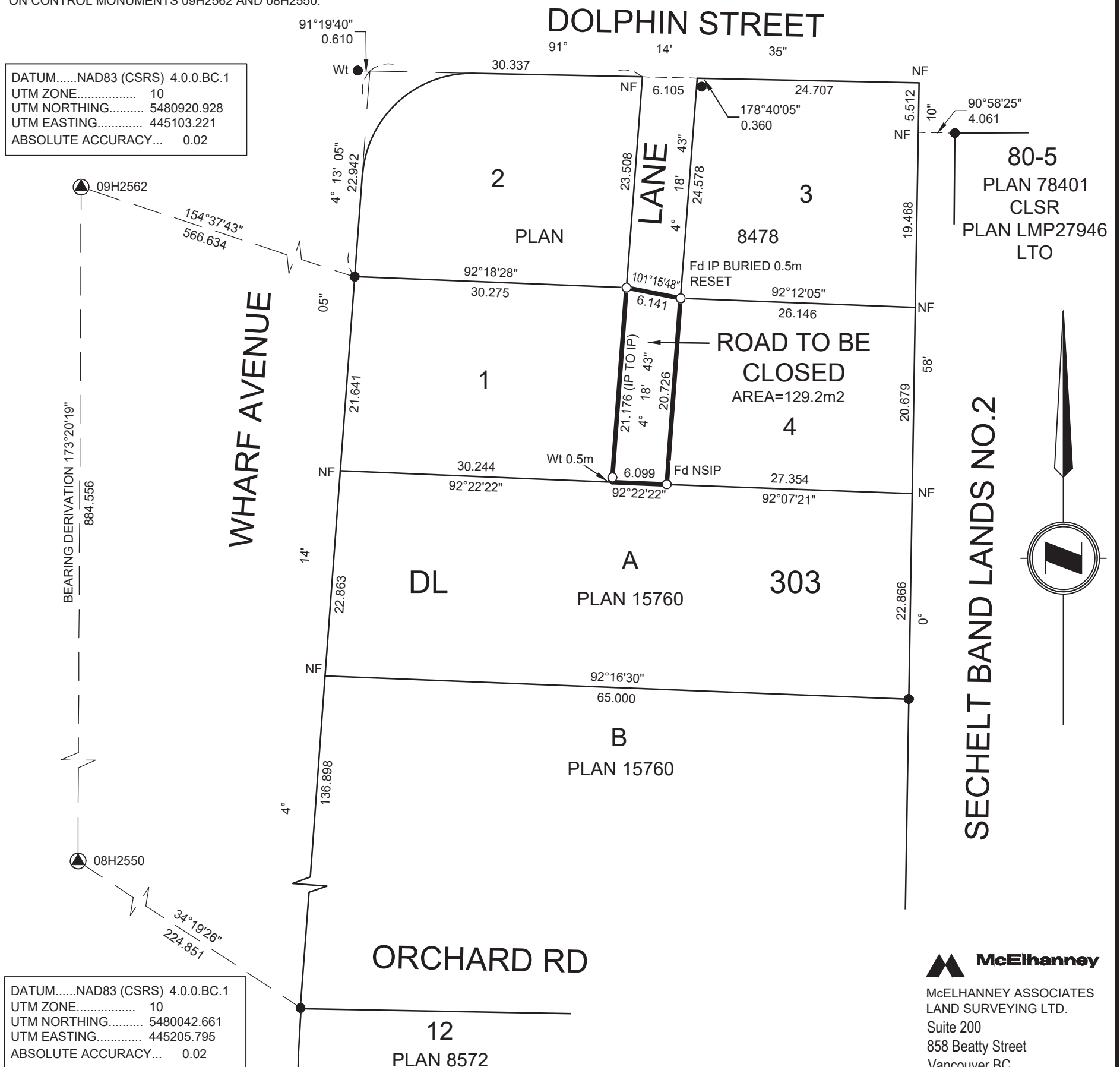
THE UTM COORDINATES AND ESTIMATED ABSOLUTE ACCURACY ACHIEVED ARE DERIVED FROM THE MASCOT PUBLISHED COORDINATES AND STANDARD DEVIATIONS FOR GEODETIC CONTROL MONUMENTS 09H2562 AND 08H2550

THIS PLAN SHOWS HORIZONTAL GROUND-LEVEL DISTANCES, UNLESS OTHERWISE SPECIFIED. TO COMPUTE GRID DISTANCES, MULTIPLY GROUND-LEVEL DISTANCES BY THE AVERAGE COMBINED FACTOR OF 0.9996388. THE AVERAGE COMBINED FACTOR HAS BEEN DETERMINED BASED ON CONTROL MONUMENTS 09H2562 AND 08H2550.

LEGEND:

SYMBOLS		DESCRIPTION
FOUND	PLACED	
●	○	CONTROL MONUMENT
●	○	STANDARD IRON POST
ha		DENOTES HECTARES
NF		DENOTES NOTHING FOUND
Wt		DENOTES WITNESS
NSIP		DENOTES NON-STANDARD IRON POST (2CM IRON PIPE)

NOTE:
THIS PLAN SHOWS ONE OR MORE WITNESS POSTS WHICH ARE NOT SET ON THE TRUE CORNER(S). SOME POSTS ARE EXAGGERATED FOR CLARITY.



DATUM.....NAD83 (CSRS) 4.0.0.BC.1
UTM ZONE..... 10
UTM NORTHING..... 5480920.928
UTM EASTING..... 445103.221
ABSOLUTE ACCURACY... 0.02

DATUM.....NAD83 (CSRS) 4.0.0.BC.1
UTM ZONE..... 10
UTM NORTHING..... 5480042.661
UTM EASTING..... 445205.795
ABSOLUTE ACCURACY... 0.02

THIS PLAN LIES WITHIN THE SUNSHINE COAST REGIONAL DISTRICT
THE FIELD SURVEY REPRESENTED BY THIS PLAN WAS COMPLETED
ON THE 10TH DAY OF DECEMBER, 2021
MARTIN HARRICHHAUSEN, BCLS #723

McElhanney
McELHANNEY ASSOCIATES
LAND SURVEYING LTD.
Suite 200
858 Beatty Street
Vancouver BC
Canada V6B 1C1
Tel 604 683 8521
OUR FILE NO. 2113-04160-00
04160-00-V-02-R0.DWG